



## MS148-07 TRUNK HINGE STRUT KIT INSTALLATION INSTRUCTIONS 1970-81 CAMARO and FIREBIRD

\*Please read all of the instructions thoroughly before beginning the installation. If you do not feel that you have the mechanical aptitude to complete the job in a safe manner, Eddie Motorsports strongly recommends that you employ the services of a knowledgeable technician to perform the installation.

\*We recommend that you use painter's tape to liberally mask off the edges of your trunk lid and fenders to protect your paint. Eddie Motorsports will not be held responsible for scratches or damages that occur during the installation process.

\*Do not attempt the installation alone. There are several steps in the installation process that require two people to complete safely.

\*To prevent galling of stainless steel fasteners, apply anti-seize compound to all bolt threads. Fasteners that have seized will not be warrantied.

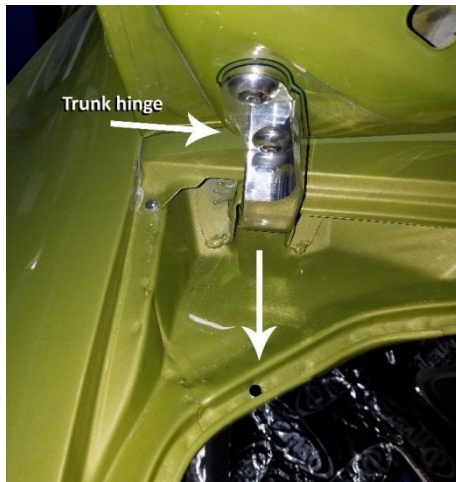
\*Eddie Motorsports trunk hinge strut kit is supplied with a nitrogen filled gas strut that we have pre-determined to be the correct strength for your vehicle's deck lid. Should your lid be lighter or heavier than the original trunk lid that we tested and the struts do not hold up the lid, we will gladly exchange the struts for ones that have the strength to more adequately work with your specific application. Exchanges can only be made with proof of purchase and within one year of the original purchase.

\*Eddie Motorsports does not guarantee the function of our trunk hinges on lids that have been modified (i.e. added carpeting, padding, excessive customization, heavy bondo, mirrors or deck lid additions OF ANY KIND).

\*Due to the extreme variance in construction quality, rigidity, and weight, Eddie Motorsports does not guarantee the function of our trunk hinges with fiberglass or carbon fiber deck lids.

### Install the lower strut mount

1.) Remove the deck lid weather stripping on the driver's side of the car, in the corner closest to the front of the car to expose the inner channel.



2.) Locate and mark a spot in the center of the weather strip channel, directly across from the center of the trunk hinge as shown. Drill 1/4" hole at the mark.

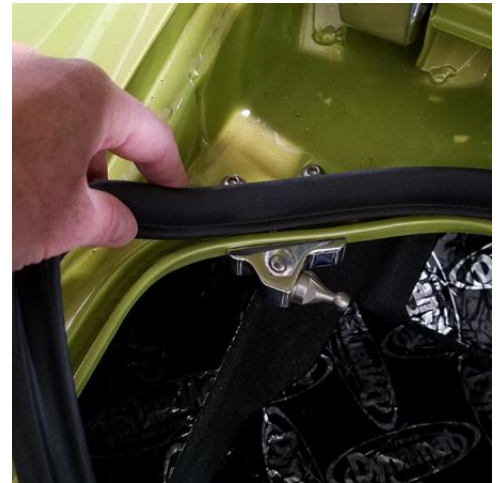


3.) Place the lower strut mount underneath the drip rail with the recessed edge facing "up" and the ball stud pointing to the right or to the center of the trunk. Apply anti-seize to the 1/4" X 3/4" button head bolt and fasten the bracket with the nut on the underside of the drip rail. Make sure the edge of the recessed portion of the bracket is installed tightly against the edge of the drip rail.





4.) From the underside of the drip rail, use the lower strut mount as a template and drill the additional two 5/16" mounting holes. Apply anti-seize to the 5/16" X 3/4" button head bolt and fasten the bracket permanently.

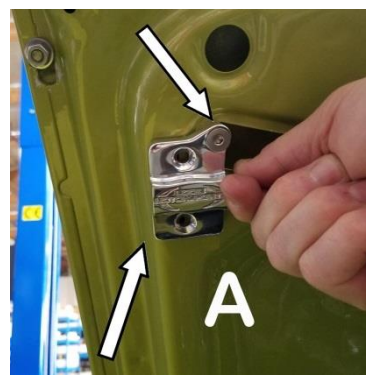


5.) Reinstall the weather stripping back into the weather strip channel.

### Install the upper strut mount



1) Apply anti-seize to a 1/4" X 3/4" socket cap flathead bolt and loosely fasten the "L" bracket into the hole in the outer corner of the Upper Strut Mount as shown.



2.) "Hook" the "L" bracket into the top pocket in the deck lid. Slide the bracket until it contacts the inside edge of the top corner of the pocket and the bracket is parallel to the outer edge of the seam on the deck lid (Image A). Once in position, mark the two holes for drilling.

3.) Remove the upper strut mount and drill the two marked holes using a 1/4" drill. Use caution to make sure you only drill through the first layer of the trunk lid.

4.) Re-install the Upper Strut Mount and "L" bracket. Apply anti-seize to 1/4" X 3/4" socket cap flathead bolts and carefully install them through the mount and into the threads in the "L" bracket. Once both bolts are started, tighten all three of the socket cap flathead bolts evenly using caution not to over tighten.

## Install the strut

- 1.) Using a flat blade screwdriver, carefully remove the plastic locking caps at either end of the strut.
- 2.) Install the body end of the strut onto the ball stud on the Lower Strut Mount on the drip rail. Install the shaft side of the strut onto the ball stud on the Upper Strut Mount on the deck lid. **NOTE: the strut will operate properly when mounted in either direction.**
- 3.) Re-install the plastic locking caps onto either end of the strut.

